



# Green Economy Financing Facility, Egypt

Facility Overview & Technical Assistance

March 2020



# GEFF Egypt Stakeholders



Developed by

Supported by

In cooperation with

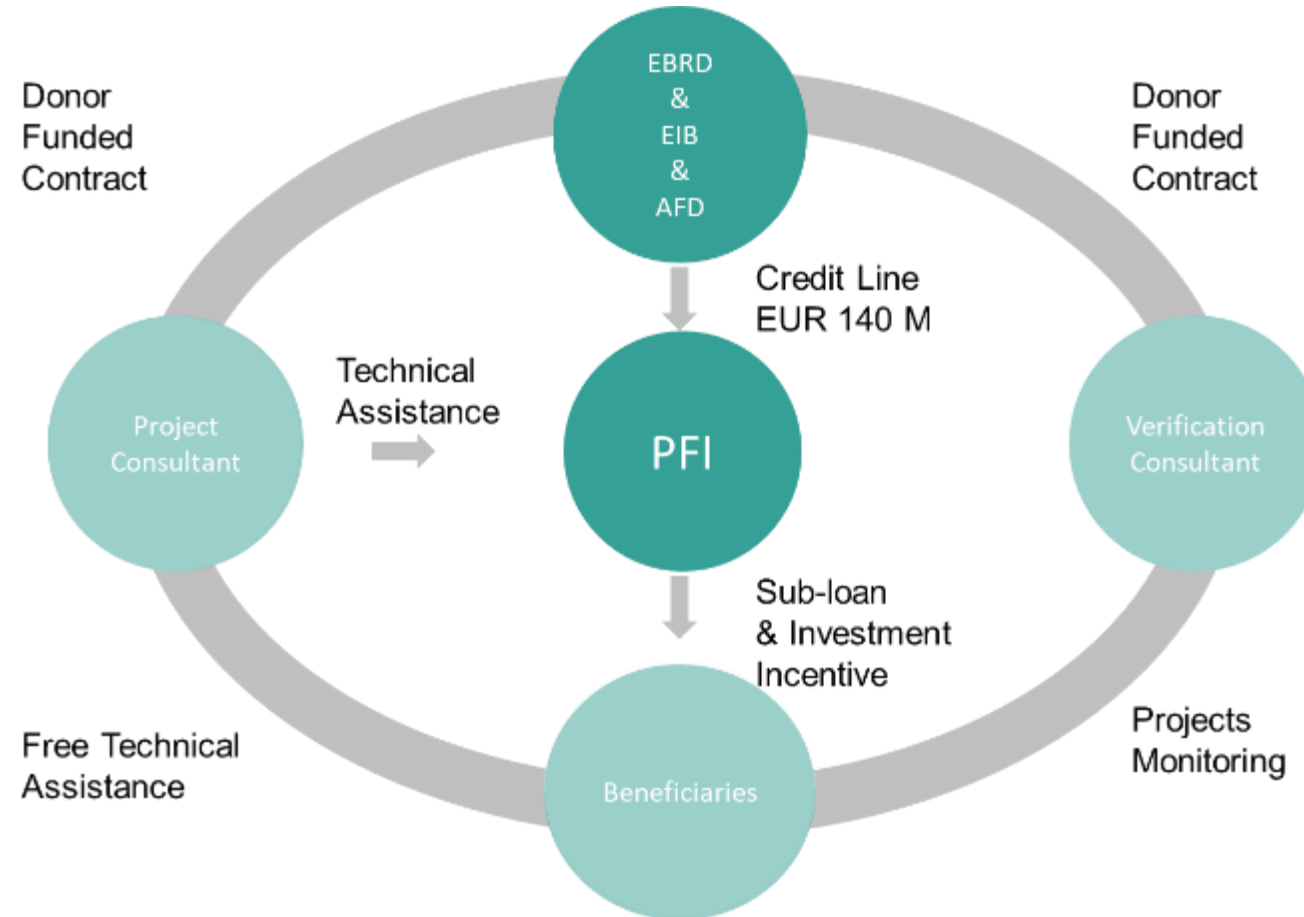


Current Participating Financial Institutions

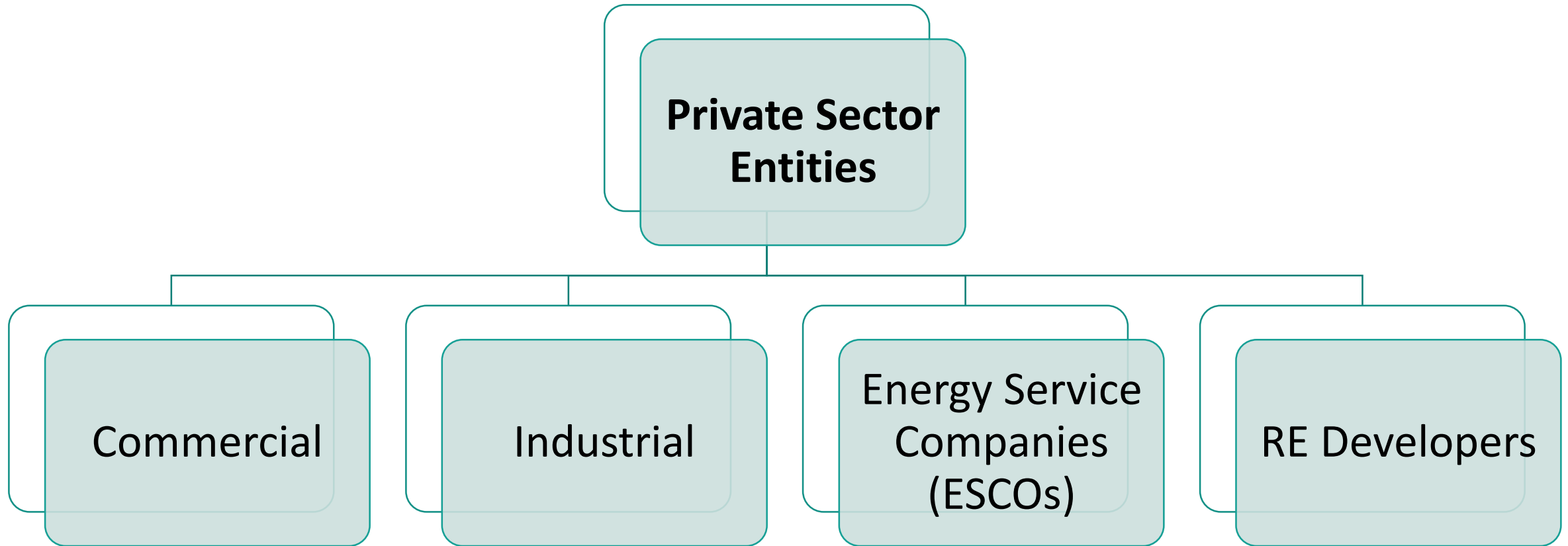


GEFF is supported by the EBRD's Shareholders Special Fund and the European Union's Neighbourhood Investment Facility (EU-NIF).

# GEFF Egypt Stakeholders



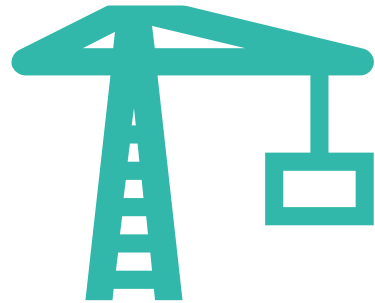
# GEFF Beneficiaries



# Exclusions



Majority owned companies  
by government or political  
bodies



Greenfield  
investments/start up  
/venture capital



Working capital finance



Some activities such as  
gambling and tobacco



VAT

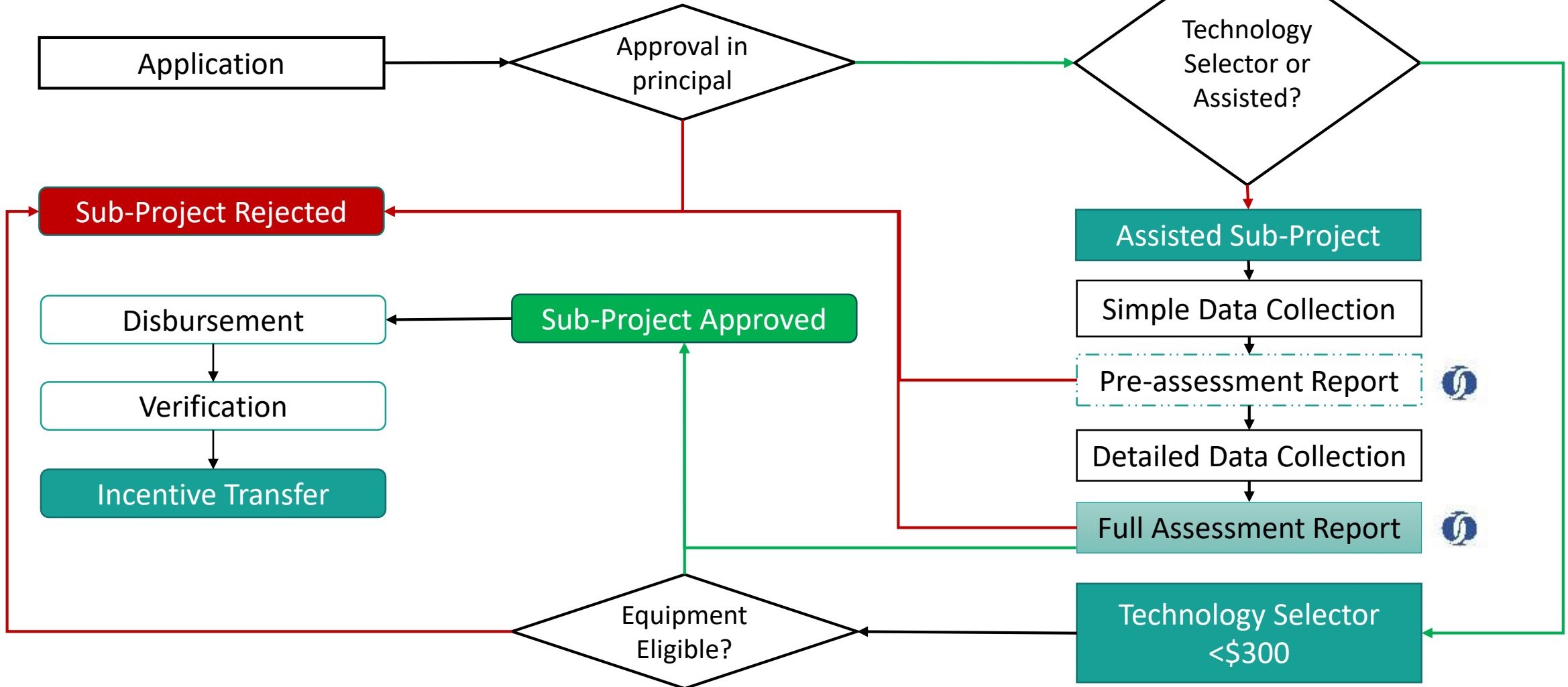
# Sub-Loans Snapshot



GEFF Benefits	Technology Selector Loans	Project Assessment Loans	Suppliers & Vendor Loan	
			Energy Service Company Loans	Equipment Vendor & Producer & Service provider Loans
Maximum Loan Amount	USD300,000	USD5,000,000	USD5,000,000	USD1,000,000 to USD5,000,000
Investment Grant	10%	10% or 15% depending on efficiency	10% or 15% depending on efficiency	Not Applicable
Free Technical Assistance	Yes, to select equipment	Yes, to select best solution, assess profitability, prepare loan application, make your idea bankable!		

# Sub-Project Lifecycle

assisted vs. pre-approved sub-projects



# Migration to the Global Technology Catalogue



GEFF Green Economy Financing Facility | European Bank for Reconstruction and Development | PRODUCT CATALOGUE | EBRD GEFF | Hello, log in | Vendor account

- CATEGORY
- Windows & Doors
  - Insulation
  - Boilers
  - Heat pumps
  - Power & Cogeneration
  - Cooling
  - Motors & Pumps
  - Process Technologies
  - Transport
  - Lighting

## GEFF in Egypt TECHNOLOGY SELECTOR

Browse eligible products available to purchase in Egypt.





# Technical Assessment

assisted sub-projects



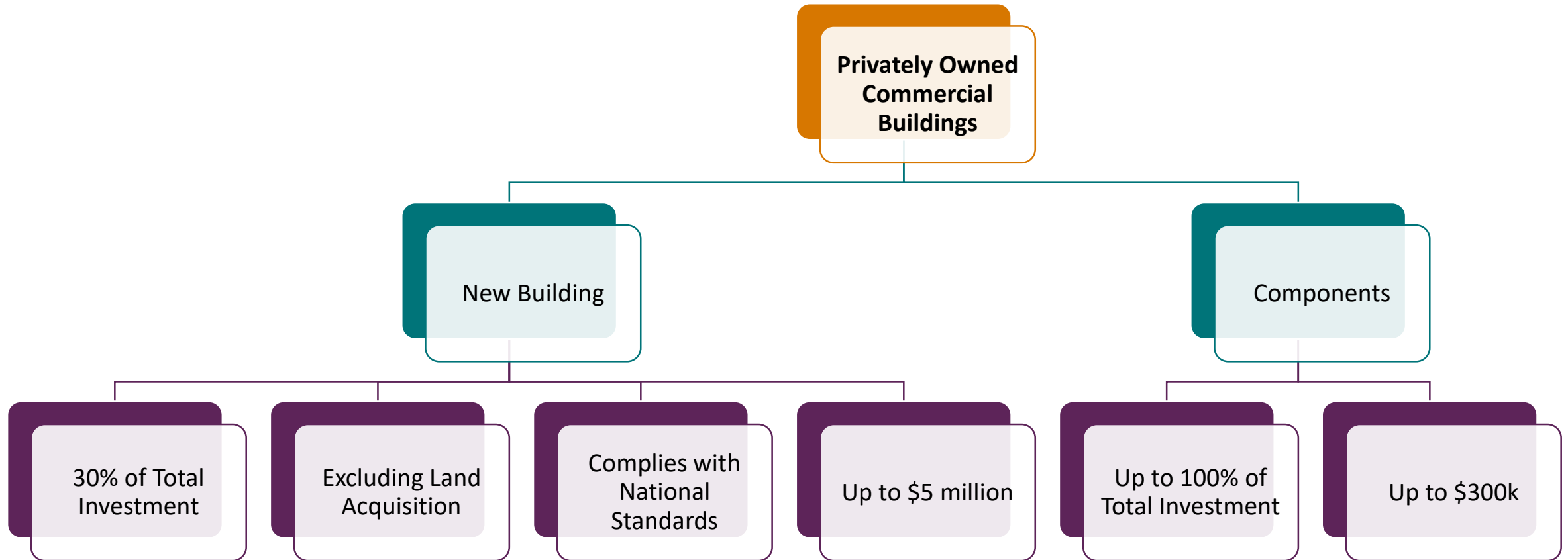
## Technical Assessment

- Assess current baseline
- Assess suitability of the proposed technology and project design
- Quantify energy savings
- Quantify GHG emissions reduction
- Calculate energy saving ratio
- Confirm level of eligibility
- Sensitivity Analysis (if needed)

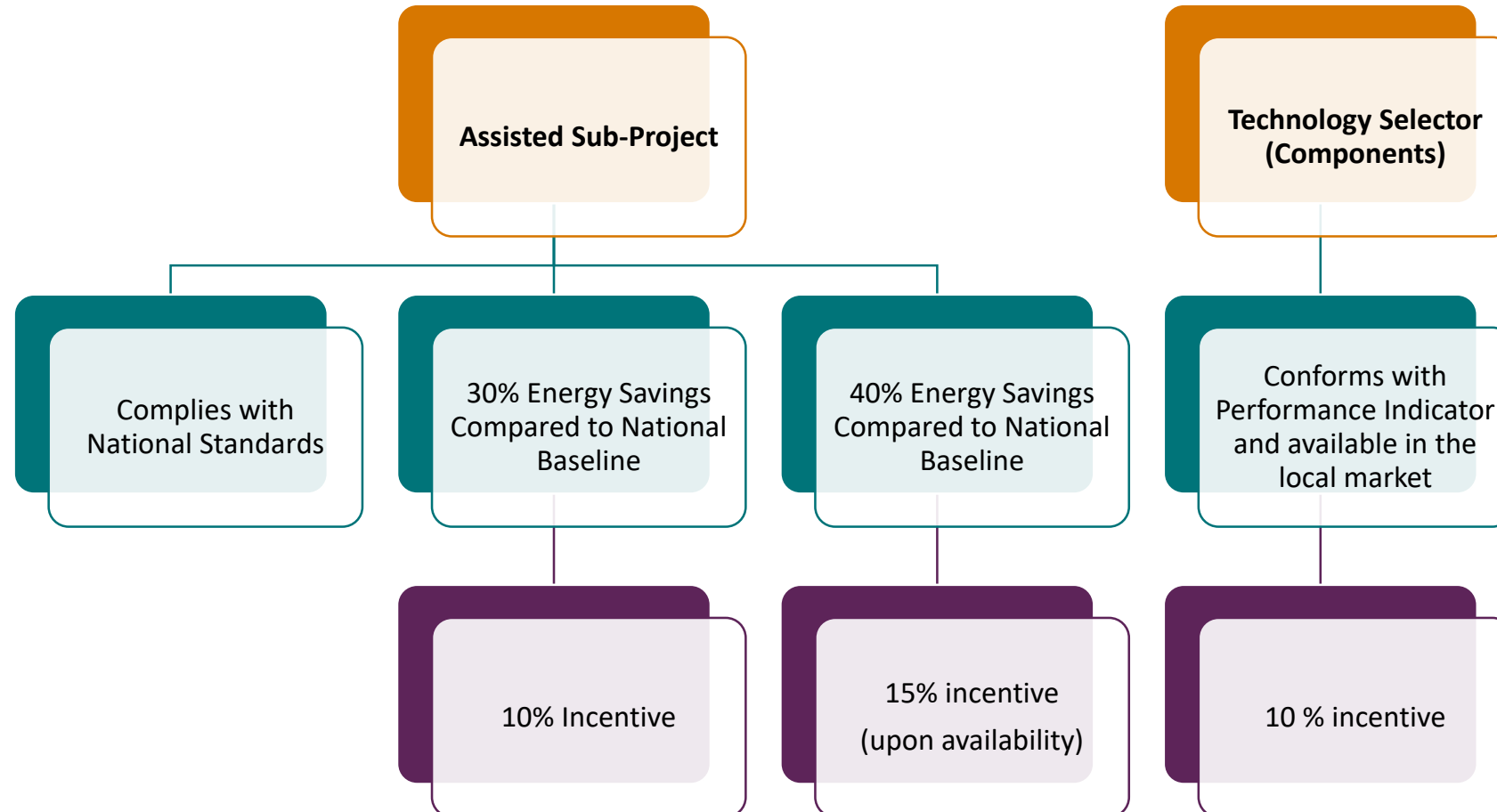
## Financial Assessment

- Cross check project CAPEX based on suppliers' quotation/proforma invoices, etc.
- Project cashflows
- Key financial indicators
  - Payback
  - IRR
  - NPVs
- Debt Service Coverage Ratio (project finance)

# Financing Buildings



# Financing Buildings



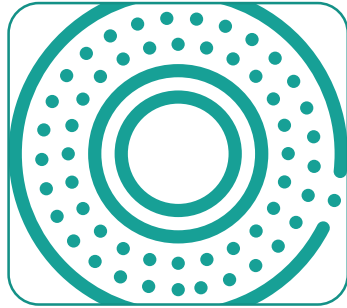
# Financing Buildings

## Technology Selector: Categories and Technologies



### Windows & Doors

- Windows
- Glazing
- Doors



### Insulation

- 50-99 mm
- 100-149 mm
- >150 mm

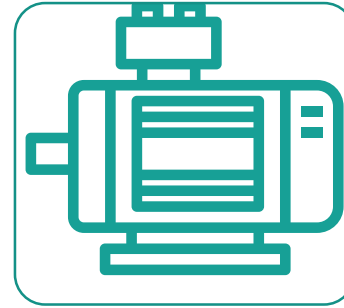


### Solar Thermal Collectors



### Cooling

- Water Cooled Chillers
- Air Cooled Chillers
- Absorption Chillers



### Motors & Pumps

- Electric Motors
- Water Pumps



### Lighting

- High Pressure Sodium Lamps
- LED Lighting



**Thank you**

**Questions**