



NEEREA Overview

Ghada Rahal

Energy Engineer

Lebanese Center for Energy
Conservation (LCEC)

February 25, 2020

Beirut, Lebanon

The "National Energy Efficiency and Renewable Energy Action" (NEEREA) is a national financing mechanism initiated by the **Central Bank of Lebanon** (Banque du Liban-BDL) dedicated to the financing of green energy projects in Lebanon.

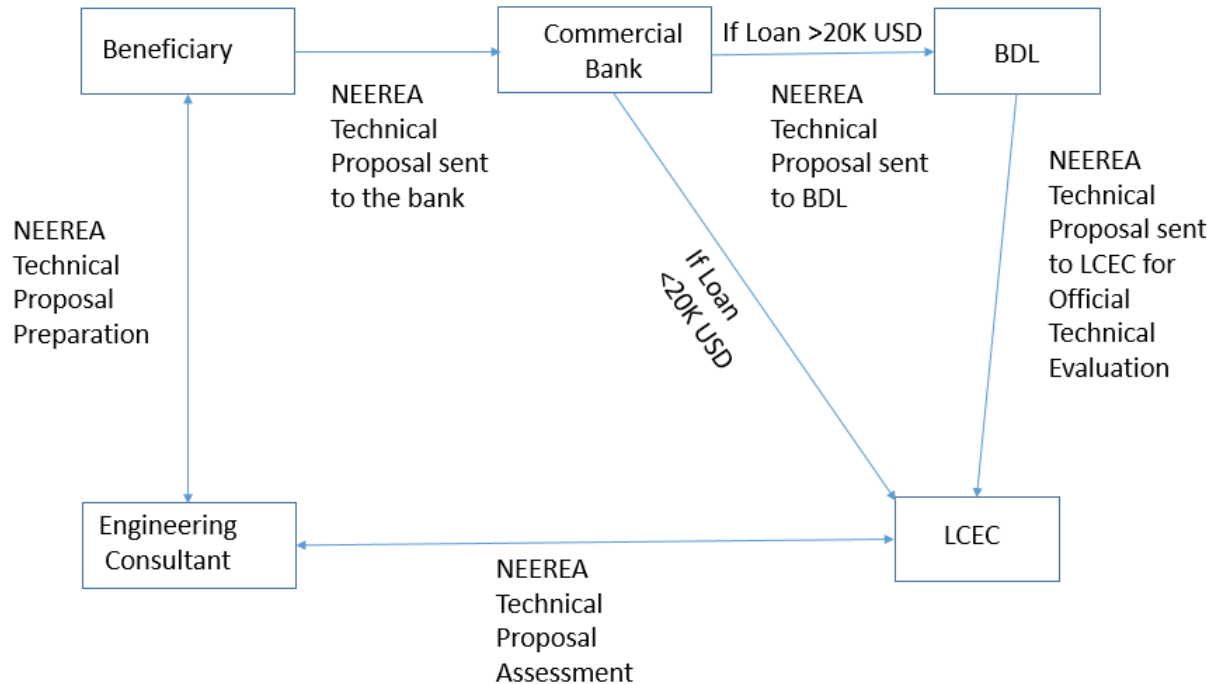


Interest on NEEREA Loans

Libor 1 Year
-0.52%



NEEREA Loans Process



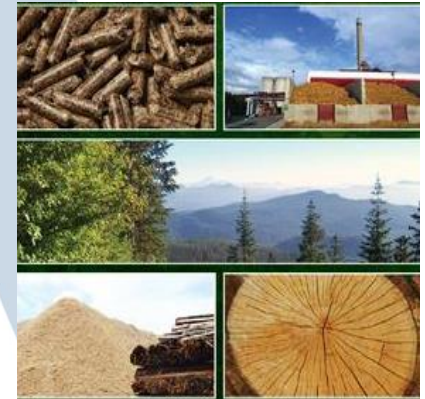
1. Renewable Energy Measures(RE)



**Solar Water
Heater Systems
(SWH)**



**Photovoltaic
Systems**

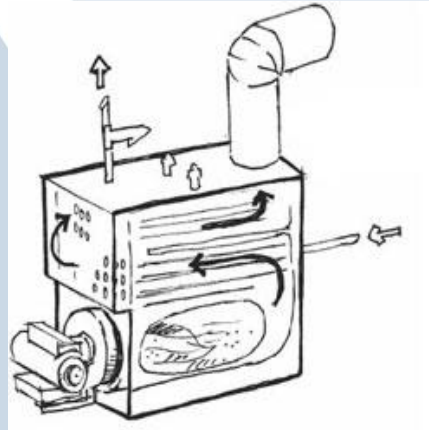


**Biomass
Applications**

2. Energy Efficiency Measures (EE)



**LED Lighting
Systems with
Motion
Detectors**



**Efficient
Heating
& Cooling
Systems and
Equipment**



**Control
System on
Elevators
(VVVFs)**

2. Energy Efficient Measures (EE)



**Variable
Frequency
Drivers (VFDs)**

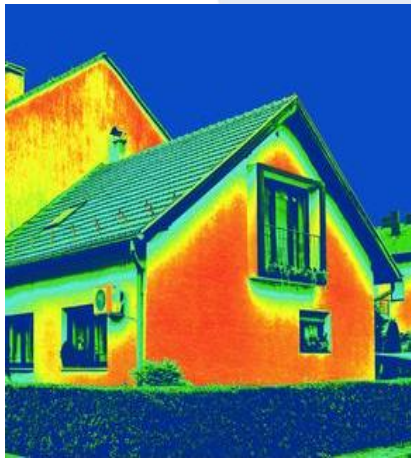


**Heat Recovery
Systems**



Heat Pumps

2. Energy Efficient Measures(EE)



Building Envelope Improvement Applications:
Double Walls, Double Glazing, Thermal Insulation, Sandwich Panels, louvers...



Building Management Systems (BMS & KNX)



Thank You